

## Announcement of Organizational and Personnel Changes

Sumitomo Mitsui DS Asset Management Company, Limited (President and CEO: Takashi Saruta) has decided the following organizational and personnel changes.

The purposes of these changes are to improve client satisfaction further and to become the best asset management company that contributes to "Quality of Life". For details of the new organization, please refer to "New Organizational Structure" in Appendix 1.

### 1. Organizational Changes (Effective as of April 1, 2022)

#### (1) Investment Management Division

- i. The Engagement Investment Department is integrated into the Investment Department, aiming to strengthen collaboration in investment management operations. In addition, the Alternative Investment Department and the Global Investment Management Department are placed under the Investment Management Division to meet clients' needs for alternative investments and enhance capability to provide investment solutions.
- ii. The Trading Department, which contributes to investment performance, is placed under the Investment Management Division to facilitate effective and efficient trade execution and investment operations. The Responsible Investment Section is also placed under the division to promote ESG activities in investment management operations.

#### (2) International Business Division

The International Business Division is newly established and the International Business Department is placed under the division.

#### (3) Asia Division

In order to strengthen our asset management business in Asia, we establish the Asia Division to oversee our subsidiaries in Hong Kong and Singapore.

#### (4) Sales & Marketing Division

The Sales Support Department is integrated into the Investment Trust Marketing Department to strengthen support for sales activities conducted by our distribution partners.

#### (5) Corporate Planning & Administration Division

The Corporate Planning & Administration Division is newly established. The division



oversees the IT Management Department, the Outsourcing Business Management Department, the Corporate Strategy Department, the Human Resources Department and the Corporate Sustainability Section.

- i. The Corporate Sustainability Section within the Corporate Strategy Department becomes an independent department directly placed under the division, in order to respond to rapidly developing ESG and sustainability context in Japan and overseas, and to strengthen company-wide efforts for sustainability.
- ii. The Media Relations Section is established within the Corporate Strategy Department, in order to strengthen strategic communications in public relations, including our corporate brand.
- iii. In order to integrate functions of new business development, the Business Development Section, which has been placed within the Corporate Strategy Department, is abolished and integrated into the Corporate Strategy Department.

## (6) Risk Management Division

In order to strengthen legal and compliance functions, the corporate legal function within the General Affairs Department is transferred to the Legal & Compliance Department, which is renamed from the current Compliance Department. Other functions of the General Affairs Department are integrated into the Corporate Strategy Department, and the General Affairs Department is abolished accordingly.

## **2. Changes in Directors**

### **(1) Director scheduled to resign (Effective as of March 31, 2022)**

| Current position                                                                                           | Name             |
|------------------------------------------------------------------------------------------------------------|------------------|
| Director and Senior Managing Executive Officer<br>(Human Resources Department, General Affairs Department) | Takashi Kawahori |



## **(2) Newly appointed Director (Effective as of April 1, 2022)**

| New position                                                                                                                                                                | Current position                                                                                       | Name            |
|-----------------------------------------------------------------------------------------------------------------------------------------------------------------------------|--------------------------------------------------------------------------------------------------------|-----------------|
| Director and Senior Managing Executive Officer, Head of Asia Division<br>(Sumitomo Mitsui DS Asset Management (Hong Kong), Sumitomo Mitsui DS Asset Management (Singapore)) | Managing Executive Officer (Business in Asian Region, Sumitomo Mitsui DS Asset Management (Hong Kong)) | Kazuhisa Shimbo |

The above personnel changes will be officially decided at the extraordinary general meeting of shareholders on February 18, 2022.

## **3. Changes in Executive Officers (Effective as of April 1, 2022)**

### **(1) Promoted Executive Officers**

| New position<br>(Departments in Charge)                                                                                                                                                                                         | Current position<br>(Departments in Charge)                                                                                                                                                             | Name            |
|---------------------------------------------------------------------------------------------------------------------------------------------------------------------------------------------------------------------------------|---------------------------------------------------------------------------------------------------------------------------------------------------------------------------------------------------------|-----------------|
| Senior Managing Executive Officer, Head of Corporate Planning & Administration Division and Head of Risk Management Division (IT Management Department, Outsourcing Business Management Department, Human Resources Department) | Managing Executive Officer (Corporate Strategy Department, Human Resources Department, General Affairs Department, Sumitomo Mitsui DS Asset Management (UK), Sumitomo Mitsui DS Asset Management (USA)) | Tsuyoshi Imai   |
| Managing Executive Officer (Wealth Development Department, Investment Trust Marketing Department, Client Service Department)                                                                                                    | Executive Officer (Marketing Planning Department, Wealth Development Department, Investment Trust Marketing Department, Sales Support Department)                                                       | Takenari Suzuki |



## **(2) Newly appointed Executive Officers**

| New position<br>(Departments in Charge)                                             | Current position<br>(Departments in Charge)      | Name                |
|-------------------------------------------------------------------------------------|--------------------------------------------------|---------------------|
| Executive Officer<br>(Risk Management Department,<br>Legal & Compliance Department) | General Manager of Risk<br>Management Department | Tomonobu<br>Matsui  |
| Executive Officer<br>(Human Resources Department)                                   | General Manager of Human<br>Resources Department | Naofumi<br>Yamamoto |



## (3) Changes in responsibilities of executive officers

| New position<br>(Departments in Charge)                                                                                                                                                           | Current position<br>(Departments in Charge)                                                                                                                                                   | Name             |
|---------------------------------------------------------------------------------------------------------------------------------------------------------------------------------------------------|-----------------------------------------------------------------------------------------------------------------------------------------------------------------------------------------------|------------------|
| Director and Senior Managing Executive Officer, Head of Investment Management Division (Investment Department (Supervision and Fixed Income), Trading Department, Responsible Investment Section) | Director and Senior Managing Executive Officer, Head of Investment Management Division (Investment Department (Supervision), Insurance Account Department I, Insurance Account Department II) | Shingo Imai      |
| Senior Managing Executive Officer, Deputy Head of Investment Management Division (Product Development)                                                                                            | Senior Managing Executive Officer, Deputy Head of Investment Management Division (Product Development) (Alternative Investment Department, Global Investment Management Department)           | Tsuneto Iki      |
| Managing Executive Officer (Investment Department (Equity), Insurance Account Department I, Insurance Account Department II)                                                                      | Managing Executive Officer (Investment Department (Equity), Engagement Investment Department)                                                                                                 | Koichi Kinoshita |
| Managing Executive Officer (Investment Department (Investment Development))                                                                                                                       | Managing Executive Officer (Investment Department (Fixed Income))                                                                                                                             | Satoru Sakai     |
| Executive Officer (Global Investment Management Department)                                                                                                                                       | Executive Officer (Sumitomo Mitsui DS Asset Management (Singapore))                                                                                                                           | Takashi Kume     |
| Senior Managing Executive Officer, Head of Sales & Marketing Division (Marketing Planning Department, Disclosure Department)                                                                      | Senior Managing Executive Officer, Head of Sales & Marketing Division (Client Service Department, Disclosure Department)                                                                      | Makoto Shiraga   |
| Managing Executive Officer (Institutional Marketing Department, Client Service Department)                                                                                                        | Managing Executive Officer (Institutional Marketing Department)                                                                                                                               | Ryohei Ajisaka   |
| Representative Director and Deputy President Executive Officer, Head of International Business Division (International Business Department)                                                       | Representative Director and Deputy President Executive Officer (International Business Department)                                                                                            | Takayuki Sawano  |
| Executive Officer (Corporate Strategy Department, Corporate Sustainability Section, Sumitomo Mitsui DS Asset Management (UK), Sumitomo Mitsui DS Asset Management (USA))                          | Executive Officer (Corporate Strategy Department, Sumitomo Mitsui DS Asset Management (UK), Sumitomo Mitsui DS Asset Management (USA))                                                        | Tsuyoshi Nijima  |

\*For details on the responsibilities of all executive officers, please refer to "List of Executive Officers on Appendix 2."



**[Contact information for this news release]**

**Katsuki Maruyama** General Manager / Corporate Sustainability Section, Corporate Strategy Department

Direct: +81-3-6205-1908, E-mail:katsuki\_maruyama@smd-am.co.jp

**Yasuko Kawase** Manager / Corporate Sustainability Section, Corporate Strategy Department

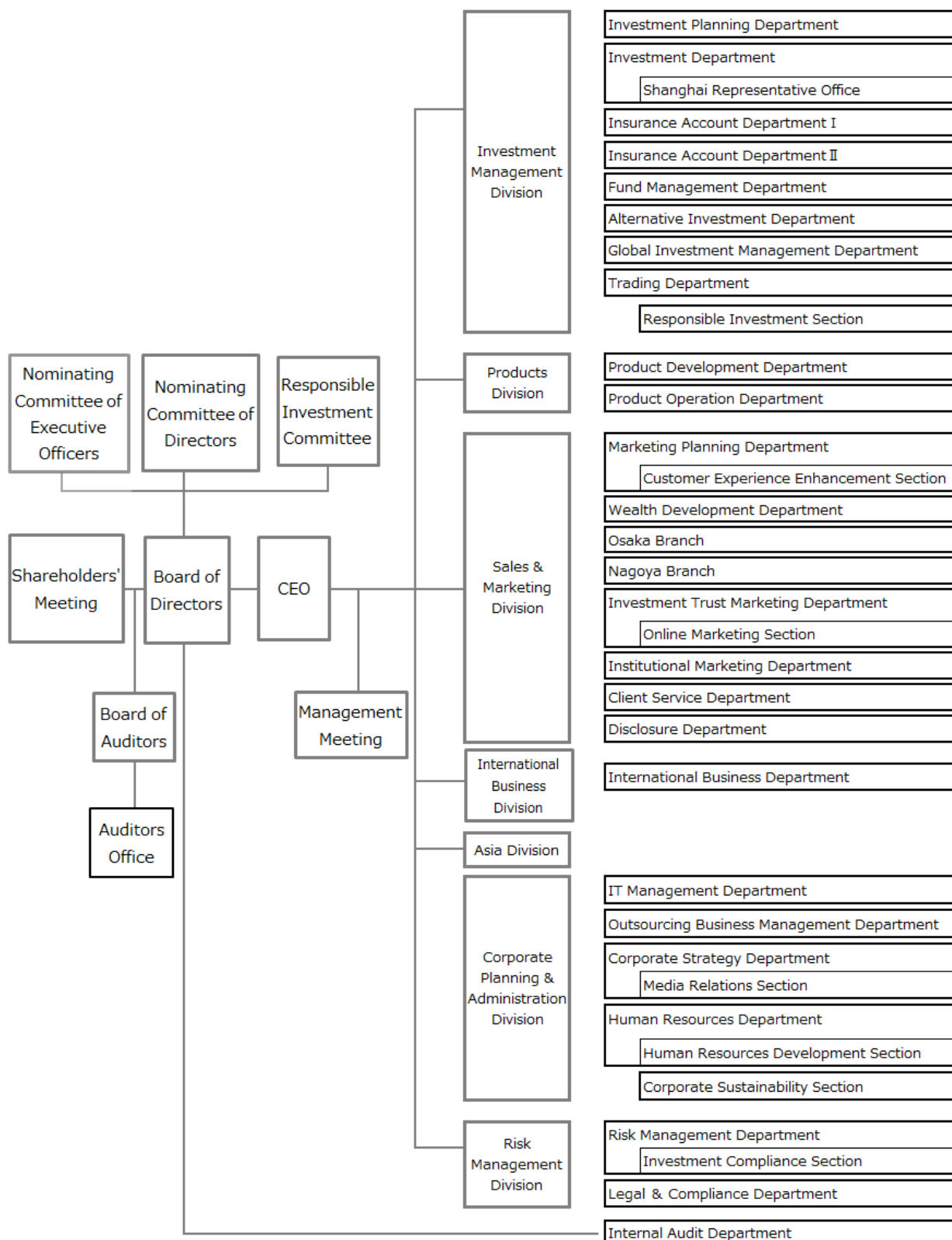
Direct: +81-3-6205-1902, E-mail:yasuko\_kawase@smd-am.co.jp

**Nozu Murayama** Manager / Corporate Sustainability Section, Corporate Strategy Department

Direct: +81-3-6205-1533, E-mail:nozu\_murayama@smd-am.co.jp



## < Appendix 1 > New Organizational Structure (As of April 1, 2022)



## < Appendix 2 >List of Executive Officers ( As of April 1, 2022 )

| Name             | New Position<br>(Departments in Charge)                                                                                                                                                                                                |
|------------------|----------------------------------------------------------------------------------------------------------------------------------------------------------------------------------------------------------------------------------------|
| Takashi Saruta   | Representative Director, President and CEO                                                                                                                                                                                             |
| Takayuki Sawano  | Representative Director and Deputy President Executive Officer<br>Head of International Business Division<br>(International Business Department)                                                                                       |
| Shingo Imai      | Director and Senior Managing Executive Officer<br>Head of Investment Management Division<br>(Investment Department (Supervision and Fixed Income), Trading Department,<br>Responsible Investment Section)                              |
| Kazuhisa Shimbo  | Director and Senior Managing Executive Officer<br>Head of Asia Division<br>(Sumitomo Mitsui DS Asset Management(Hong Kong), Sumitomo Mitsui DS Asset<br>Management(Singapore))                                                         |
| Makoto Shiraga   | Senior Managing Executive Officer<br>Head of Sales & Marketing Division<br>(Marketing Planning Department, Disclosure Department)                                                                                                      |
| Mineo Takatsuka  | Senior Managing Executive Officer<br>(Osaka Branch, Nagoya Branch)                                                                                                                                                                     |
| Tsuneto Iki      | Senior Managing Executive Officer<br>Deputy Head of Investment Management Division (Product Development)                                                                                                                               |
| Tsuyoshi Imai    | Senior Managing Executive Officer<br>Head of Corporate Planning & Administration Division<br>Head of Risk Management Division<br>(IT Management Department, Outsourcing Business Management Department,<br>Human Resources Department) |
| Yuichiro Yoda    | Managing Executive Officer<br>(Alternative Investment Department, Global Investment Management Department)                                                                                                                             |
| Satoru Sakai     | Managing Executive Officer<br>(Investment Department (Investment Development))                                                                                                                                                         |
| Koichi Kinoshita | Managing Executive Officer<br>(Investment Department (Equity), Insurance Account Department I, Insurance<br>Account Department II)                                                                                                     |
| Ryohei Ajisaka   | Managing Executive Officer<br>(Institutional Marketing Department, Client Service Department)                                                                                                                                          |

(Continued on the next page)



| Name             | New Position<br>(Departments in Charge)                                                                                                                                     |
|------------------|-----------------------------------------------------------------------------------------------------------------------------------------------------------------------------|
| Kazushi Iwai     | Managing Executive Officer<br>(Investment Planning Department, Fund Management Department, Trading Department)                                                              |
| Osamu Ueyama     | Managing Executive Officer<br>Head of Products Division<br>(Product Development Department, Product Operation Department)                                                   |
| Takenari Suzuki  | Managing Executive Officer<br>(Wealth Development Department, Investment Trust Marketing Department, Client Service Department)                                             |
| Takashi Kume     | Executive Officer<br>(Global Investment Management Department)                                                                                                              |
| Tsuyoshi Nijima  | Executive Officer<br>(Corporate Strategy Department, Corporate Sustainability Section, Sumitomo Mitsui DS Asset Management (UK), Sumitomo Mitsui DS Asset Management (USA)) |
| Tomonobu Matsui  | Executive Officer<br>(Risk Management Department, Legal & Compliance Department)                                                                                            |
| Naofumi Yamamoto | Executive Officer<br>(Human Resources Department)                                                                                                                           |

